




Kentucky High School Athletic Association

2280 Executive Drive ° Lexington, KY 40505 ° www.khsaa.org ° (859)299-5472 (859)293-5999 (fax)

MEMORANDUM

To: Superintendent, Principal, and Athletic Director
Western High School

From: Brigid L. DeVries, Commissioner
Larry Boucher, Assistant Commissioner 

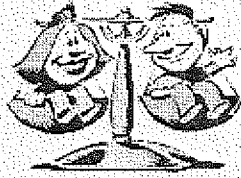
Date: May 19, 2005

Subject: 2004-2005 Title IX Annual Report Forms Submission

Enclosed please find a copy of Form T-65, the 2004-2005 KHSAA Title IX Annual Report Submission Status Report. In addition, you may find an attachment with corrected copies of the forms submitted by your school personnel. Please review this information so the forms can be completed accurately in the future.

Also, KHSAA Audit Team Members may have requested resubmission of some of the 2004-2005 Annual Report Forms or need additional information on your athletic programs. Please submit this information by the date requested if this is applicable. Copies and all KHSAA Title IX documents must be kept current and included in your permanent Title IX File at the school. All documents are subject to Open Records Requests.

Should you need any further information, please do not hesitate to call anytime.



**KHSAA TITLE IX
ANNUAL REPORT SUBMISSION
STATUS REPORT
2004-2005**

KHSAA
Form T65
Revised 4/05

TO: KHSAA Member School Superintendents, Principals, and Athletic Directors

FROM: Brigid L. DeVries, Commissioner
Larry Boucher, Assistant Commissioner

DATE: May 19, 2005

School	Western High School	Reviewed by	Reba Woodall
--------	---------------------	-------------	--------------

The following is a status report regarding the required 2004 - 2005 Title IX Annual Report submission of forms due into the KHSAA office by April 15, 2005. Appropriate KHSAA Audit Team personnel have reviewed these forms and the following is a summary of this review.

I. Checklist of Forms properly submitted in a satisfactory manner:

✓	GE 19 (Annual Verification)		T-35 (Budget Chart)
✓	T-1 (Summary Program Chart 1)		T-36 (Budget Chart)
✓	T-2 (Summary Program Chart 2)	✓	T-41 (Checklist – Overall Interscholastic Program)
✓	T-3 (Summary Program Chart 3)	✓	T-60 (Corrective Action Plan)
✓	T-4 (Summary Program Chart 4)		

II. Status

A.		2004 – 2005 Forms are satisfactory and no further information or action is necessary at this time.
B.	✓	<p>Errors have been noted with respect to the following forms:</p> <ul style="list-style-type: none"> ▪ <i>Forms T-35 & T-36 (Budget Charts)</i> – The coaches' salaries should be listed on this form, even though they are paid by Jefferson County. Also, on the bottom of Form T-36, the total expenditures and percentage for both boys and girls needs to be completed. <p>Please resubmit corrected Forms T-35 & T-36 to the KHSAA no later than June 15, 2005.</p>
C.		The following forms were omitted and must be submitted by school representatives:
D.	✓	<p>Other Recommendation and Comments:</p> <ul style="list-style-type: none"> ▪ It is recommended that your Gender Equity Review Committee meet at least once during the fall sports season, once during the winter sports season and once during the spring sports season.



**2004-2005 KENTUCKY HIGH SCHOOL ATHLETIC ASSOCIATION
ANNUAL VERIFICATION OF TITLE IX PROCEDURES**

APR 15 2005

(To be submitted by April 15, 2005 along with other required forms)

The Western High School, Louisville, Kentucky
(Name of High School) (City)

certifies to the Kentucky High School Athletic Association that the following is an accurate and true representation of the facts surrounding compliance with 20 U.S.C. Sections 1681-1688, et. Seq. (also known as Title IX)

I certify the following provisions in accordance with records at the school contained in the permanent Title IX file, and to the best of my knowledge have completed the following tasks (All boxes must be checked).

- Established a gender equity committee at the high school. (list committee personnel and provide attachment if necessary)

Name	Address	Phone	Title
KEVIN SALYER	2501 ROCKFORD LANE 40216	485 8710	AD
JOHN VOELKER	2501 ROCKFORD LANE 40216	485 8344	ASST. PRINCIPAL
LOUIS HUGHLEY	2501 ROCKFORD LANE 40216	485 8344	PRINCIPAL
GLEN ZELL	2501 ROCKFORD LANE 40216	485 8344	TEACHER/COACH
JIM ASHBY	3031 LIKENS AVENUE 40216	778 9399	PARENT
ALAN BARNES	4541 FLINTLOCK DRIVE 40216	447 2211	STUDENT
MEGAN FEATHER	1636 CLARA AVENUE 40215	368 5777	STUDENT

- Scheduled a minimum of three meetings during the 2004-2005 school year on the following dates:

JANUARY 26, 2005
MARCH 10, 2005
MARCH 30, 2005

- Designated the following person(s) as the Title IX coordinator for the school:

KEVIN SALYER AD 2501 ROCKFORD LANE 40216 485 8710
Name Title Address Phone

- Designated the following person(s) as the Title IX coordinator for the district:

JIM WATKINS DIRECTOR 3332 NEWBURG ROAD 40218 485 3182
Name Title Address Phone

- School personnel are continuing to make periodic reviews of the boys' and girls' athletics program reflected in the Corrective Action Plan.

- In addition to the above information, the above referenced school maintains a complete permanent file relative to Title IX records including copies of the self-assessment audit, all corrective action plans, and other related materials.

Louis E. Hughley
Principal's Signature

3/25 2005
Date

Stephanie P. ...
Superintendent's Signature

Joseph J. Hardin
School Board Chairpersons' Signature

(Send original copy to KHSAA - Maintain duplicate in Title IX school folder)



**2004-2005 KENTUCKY HIGH SCHOOL ATHLETIC ASSOCIATION
ANNUAL VERIFICATION OF TITLE IX PROCEDURES
(To be submitted by April 15, 2005 along with other required forms)**

The Western MST High School, Louisville, Kentucky
(Name of High School) (City)

certifies to the Kentucky High School Athletic Association that the following is an accurate and true representation of the facts surrounding compliance with 20 U.S.C. Sections 1681-1688, et. Seq. (also known as Title IX)

I certify the following provisions in accordance with records at the school contained in the permanent Title IX file, and to the best of my knowledge have completed the following tasks (All boxes must be checked).

Established a gender equity committee at the high school. (list committee personnel and provide attachment if necessary)

Name	Address	Phone	Title
Louis Hughley	2501 Rockford Lane Louisville, KY 40216	502-485-8344	Principal
John Voelker	2501 Rockford Lane Louisville, KY 40216	502-485-8344	Assistant Principal
Glen Zell	2501 Rockford Lane Louisville, KY 40216	502-376-1732	Teacher/Coach
Kevin Salyer	5910 Trappers Ridge Louisville, KY 40216	502-448-8219	Athletic Director
Jim Ashby	3031 Likens Avenue Louisville, KY 40216	502-778-9399	Parent
Alan Barnes	4541 Flintlock Drive Louisville, KY 40216	502-447-2211	Student Athlete, Jr.
Megan Feather	1636 Clara Avenue Louisville, KY 40215	502-368-5777	Student Athlete, Soph.

Scheduled a minimum of three meetings during the 2004-2005 school year on the following dates:
January 26, 2005, March 10, 2005, March 30, 2005

Designated the following person(s) as the Title IX coordinator for the school:

Kevin Salyer	Athletic Director	5910 Trappers Ridge	Louisville, KY 40216	502-448-8219
Name	Title	Address		Phone

Designated the following person(s) as the Title IX coordinator for the district:

Jim Watkins	Director Athletics/Activities	3332 Newburg Road	Louisville, KY 40218	502-485-3182
Name	Title	Address		Phone

School personnel are continuing to make periodic reviews of the boys' and girls' athletics program reflected in the Corrective Action Plan.

In addition to the above information, the above referenced school maintains a complete permanent file relative to Title IX records including copies of the self-assessment audit, all corrective action plans, and other related materials.

20

Principal's Signature

Date

Superintendent Signature

School Board Chairpersons' Signature

(Send original copy to KHSAA - Maintain duplicate in Title IX school folder)

2004-2005
ACCOMMODATION OF INTERESTS AND ABILITIES
SUMMARY PROGRAM CHART 1

KHSAA
 Form T1
 Rev. 10/04

Participation Opportunities Test One

		(Column 1)	(Column 2)	(Column 3)	(Column 4)
	Program	Enrollment	Percentage of Total Enrollment	Number of Interscholastic Participants (double and triple count)	Percentage of Total Participation
Row 1	GIRLS	308	38.4%	107	33.1%
Row 2	BOYS	494	61.6%	216	66.9%
Row 3	Totals	802	100%	323	100%

Instructions:

*Number of 8th grade students & below used in Column 3 and Column 4 calculations if applicable: _____ None _____

- 1) Determine the total number of girls enrolled, (place in Row 1, Column 1). Determine the total number of boys enrolled, (place in Row 2, Column 1).
- 2) Add the total number of girls and boys enrolled to determine total enrollment, (place in Row 3, Column 1).
- 3) Calculate the percentage of total enrollment that is female. (Divide Row 1, Column 1 by row 3, Column 1 and place in Row 1, Column 2.) Calculate the percentage of total enrollment that is male. (Divide Row 2, Column 1 by Row 3, Column 1 and place in Row 2, Column 2.) Note: Row 1, Column 2 plus Row 2, Column 2 should total 100%.
- 4) Ask the head coaches to review the most updated eligibility or squad lists for their teams. Ask coaches to confirm the names of those individuals who are on the team as of the first **date of competition**, and cross out the names of those who were cut from the team or quit the team prior to the first competitive event. Determine the total number of interscholastic athletics participants that are girls, (and place in Row 1, Column 3). In order to determine the total number of athletics participants, an individual should be counted each time he or she participates on a team. For example, if Jane Doe competes on the varsity volleyball team, the junior varsity volleyball team, the junior varsity basketball team, and the varsity softball team, she should be counted as four participants (**do not include club or intramural sports participants, cheerleaders, dance teams, or pom squads**). Calculate the same way for boys and girls. * In addition, should 8th grade students and below play on a Freshman, Junior Varsity, or Varsity team, they should also be counted for each team and sport on which they participate. If applicable, please asterisk the above notation as to how many 8th grade students & below are included in the totals. Using the same procedure, determine the total number of interscholastic athletic participants that are boys, (and place in Row 2, Column 3). Add Row 1, Column 3 plus Row 2, Column 3 to get total participants and place in Row 3, Column 3.
- 5) Calculate the percentage of female participation. (Row 1, Column 3 divided by Row 3, Column 3 and place in Row 1, Column 4.) Calculate the percentage of male participation. (Row 2, Column 3 divided by Row 3, Column 3 and place in Row 2, Column 4.) Note: Row 1, Column 4 plus Row 2, Column 4 should total 100%.

Note: While being within three percent is not a formal compliance standard; if the percent listed in Row 1, Column 4 is within 3% of Row 1, Column 2, then it provides a good target within which compliance is likely.

Principal's Signature: Louis E. Fitzhugh Jr. Date: 3/31/05

2004-2005
ACCOMMODATION OF INTERESTS AND ABILITIES
SUMMARY PROGRAM CHART 2

KHSAA
 Form T2
 Rev. 10/04

Participation Opportunities Test Two

		Column 1	Column 2	Column 3	Column 4	Column 5
Program		Number of Teams Currently Offered	Number of Participants	Number of Teams Added in Last Five Years	Number of Participants Added in Last Five Years	Percent of Total Participation By Sex Added in Last 5 Years
GIRLS	Row 1	varsity:	8	67	2	15
	Row 2	j.v.:	3	40	0	0
	Row 3	frosh:	0	0	0	0
	Row 4	total:	11	107	2	15
BOYS	Row 5	varsity:	9	141	1	20
	Row 6	j.v.:	2	40	0	0
	Row 7	frosh:	2	35	1	20
	Row 8	total:	13	216	2	40

- 1) For Column 1, list the number of interscholastic teams offered for girls and boys at each competitive level (varsity, junior varsity, and freshman). For girls, total each of the entries in Rows 1, 2, and 3 into Row 4. For boys, total Rows 5, 6, and 7 into Row 8.
- 2) For Column 2, list the number of participants at each level. For girls, total each of the entries in Rows 1, 2, and 3 into Row 4. For boys, total Rows 5, 6, and 7 into Row 8. **Note:** The totals in Row 4 for girls and in Row 8 for boys must be the same as the totals in Form T-1, Column 3, Rows 1 and 2 respectively.
- 3) For Column 3, list the number of interscholastic teams that have been added in the last five years at each competitive level. Count each team added during the 5 year period only one time. e.g. Girl's junior varsity soccer was added 3 years ago, count the team only once, not 3 times. For girls, total the entries in Rows 1, 2, and 3 into Row 4. For boys, total Rows 5, 6, and 7 into Row 8.
- 4) For Column 4, list the number of participants that are currently on each level of the teams that were added in the last five years. If a team was added previously but no longer exists, there are no current participants to be added for that team. For girls, total the entries in Rows 1, 2, and 3 into Row 4. For boys, total Rows 5, 6, and 7 into Row 8.
- 5) For Column 5, calculate the percentage of participants that have been added in the last five years. For girls, take the number in Column 4, Row 4 and divide by the number in Column 2, Row 4. For boys, take the number in Column 4, Row 8 and divide it by the number in Column 2, Row 8.

Note: If the percentage of current participants added in the last five years is 25% or greater, compliance with test two may be possible. If less than 25%, then compliance with test three should be analyzed. **CAUTION:** 25% is not a formal compliance standard.

Principal's Signature: Louis E. Zuppley Jr. Date: 3/31/05

2004-2005
ACCOMMODATION OF INTERESTS AND ABILITIES
SUMMARY PROGRAM CHART 3

Participation Opportunities Test Three

FOR ANY QUESTION ANSWERED "YES" IDENTIFY THE RESPECTIVE SPORT(S).

	GIRLS (Yes / No)		BOYS (Yes / No)
1. For a sport not currently played at the interscholastic level (varsity, junior varsity, or freshman) in your school, is there an intramural team offered for that sport?	NO		NO
2. For a sport <u>not</u> currently offered in your interscholastic athletics program, is there sufficient interest to form a viable interscholastic team based on participation on an intramural team or community recreation teams?	NO		NO
3. For a sport <u>not</u> currently offered, is there sufficient interest, based on your most recent Student Interest Survey, to form a viable interscholastic team based on student responses from the interscholastic survey? If yes, what sport?	NO		NO
4. For a sport currently offered at the varsity level only, is there sufficient interest, based on your most recent Student Interest Survey, to form a viable team for a junior varsity or freshman team that is not currently offered?	NO		NO
5. For a sport currently offered at the junior varsity or freshman level is there sufficient interest, based on your most recent Student Interest Survey, to form a varsity team not currently offered?	NO		NO
6. If you answered YES to question (1), (2), (3), (4), or (5), are there enough high schools in your geographic area offering the sport (at the appropriate level) to allow for the development of a reasonable schedule of competition?	N/A		N/A

Principal's Signature: Louis E. Highley Jr Date: 3/31/05

2004-2005
ACCOMODATION OF INTERESTS AND ABILITIES
SUMMARY PROGRAM CHART 4

Levels of Competition Test One

		Column 1	Column 2	Column 3
Girls	Team Levels	Number of Teams Currently Offered	Number of Participants	Percentage of Participants at Each Level
Row 1	varsity:	8	67	62.6%
Row 2	j.v.:	3	40	37.4%
Row 3	frosh:	0	0	0%
Row 4	total:		107	100%
Boys				
Row 5	varsity:	9	141	65.3%
Row 6	j.v.:	2	40	18.5%
Row 7	frosh:	2	35	16.2%
Row 8	total:		216	100%

- 1) Column 1, list the number of interscholastic teams offered for girls and boys at each competitive level; varsity, junior varsity, and freshman. (Refer to Form T-2, Accommodation of Interests and Abilities, Summary Program Chart 2, Column 1.)
- 2) For Column 2, list the number of participants at each level. For girls, total the entries in Rows 1, 2, and 3 into Row 4. For boys, total the entries in Rows 5, 6, and 7 into Row 8. (Refer to Form T-2, Accommodation of Interests and Abilities, Summary Program Chart 2, Column 2.)
- 3) For Column 3, calculate the percentage of female and male participants at each level.
For girls' varsity, junior varsity, and frosh, respectively:
 - Divide Column 2, Row 1 by Column 2, Row 4, and place the percentage in Column 3, Row 1.
 - Divide Column 2, Row 2 by Column 2, Row 4, and place the percentage in Column 3, Row 2.
 - Divide Column 2, Row 3 by Column 2, Row 4, and place the percentage in Column 3, Row 3.
 For boys' varsity, junior varsity, and frosh, respectively:
 - Divide Column 2, Row 5 by Column 2, Row 8, and place the percentage in Column 3, Row 5.
 - Divide Column 2, Row 6 by Column 2, Row 8, and place the percentage in Column 3, Row 6.
 - Divide Column 2, Row 7 by Column 2, Row 8, and place the percentage in Column 3, Row 7.

Principal's Signature: Louis E. Zinghley Jr. Date: 3/31/05

**2004-2005
BUDGETED AND ACTUAL EXPENDITURES - PROGRAM COMPARISON CHART
TO INCLUDE BOOSTER CLUB FUNDING**

	equipment and supplies	travel	awards	coaches' salaries (to include supplemental and extended employment)	facilities improvements	publications (if sport-specific)
	Expenditures	Expenditures	Expenditures	Expenditures	Expenditures	Expenditures
G basketball	\$1100	\$2500	\$100	\$0	\$0	N/A
B basketball	\$1400	\$2800	\$200	\$0	\$0	N/A
G softball	\$2300	\$600	\$200	\$0	\$3800	N/A
B baseball	\$1500	\$500	\$200	\$0	\$100	N/A
G cross country	\$100	\$100	\$100	\$0	\$0	N/A
B cross country	\$100	\$100	\$100	\$0	\$0	N/A
G golf	\$100	\$100	\$100	\$0	\$0	N/A
B golf	\$100	\$100	\$100	\$0	\$0	N/A
G soccer	\$200	\$300	\$100	\$0	\$100	N/A
B soccer	\$500	\$700	\$100	\$0	\$100	N/A
G swimming	N/A	N/A	N/A	N/A	N/A	N/A
B swimming	N/A	N/A	N/A	N/A	N/A	N/A

1. Total expenditures on T-35 and T-36 on the 2004-2005 year report due by April 15, 2005, should reflect the total monies spent (rounded off to nearest hundred) for the entire year of 2003-2004 ending June 30, 2004.

2. Booster Club Funding/Contributions must be included in the expenditures total.

Principal's Signature: *Gene L. Dougherty* Date: 3/31/05

**2004-2005
BUDGETED AND ACTUAL EXPENDITURES - PROGRAM COMPARISON CHART 2
TO INCLUDE BOOSTER CLUB FUNDING**

Teams	equipment and supplies	travel	awards	coaches' salaries (to include supplemental and extended employment)	facilities improvements	publications (if sport-specific)
	Expenditures	Expenditures	Expenditures	Expenditures	Expenditures	Expenditures
G track	\$100	\$300	\$100	\$0	\$0	N/A
B track	\$100	\$300	\$100	\$0	\$0	N/A
G tennis	\$100	\$100	\$100	\$0	\$100	N/A
B tennis	\$100	\$100	\$100	\$0	\$100	N/A
G volleyball	\$600	\$500	\$100	\$0	\$100	N/A
B wrestling	\$200	\$400	\$100	\$0	\$0	N/A
G (list sport)						
B (football)						
G (list sport)						
B (list sport)						

1. Total expenditures on T-35 and T-36 on the 2004-2005 year report due by April 15, 2005, should reflect the total monies spent (rounded off to nearest hundred) for the entire year of 2003-2004 ending June 30, 2004.

2. Booster Club Funding/Contributions must be included in the expenditures total.

3. Indicate percentage of total expenditures for each gender: Total Expenditures \$ _____ % for boys _____ % for girls _____

Principal's Signature: *Joni E. Hargrave* Date: 3/31/05

2004-2005 KHSAA TITLE IX ATHLETICS AUDIT

KHSAA
Form T41
Rev. 10/04

Checklist - Overall Interscholastic Athletics Program

DIRECTIONS:

For the Areas of Compliance (Opportunities and Benefits) listed on the left hand side of the page, place a checkmark under the appropriate column identifying whether your school provided an advantage to the Girls' Program, or to the Boys' Program or to Neither Program.

Areas of Compliance:	ADVANTAGE TO:		
	GIRLS' PROGRAM	BOYS' PROGRAM	NEITHER PROGRAM
OPPORTUNITIES			
Accommodation of Interest and Abilities			X
BENEFITS			
Equipment and Supplies			X
Scheduling of Games and Practice Time			X
Travel and Per Diem Allowances			X
Coaching			X
Locker Rooms, Practice and Competitive Facilities			X
Medical and Training Facilities and Services			X
Publicity			X
Support Services			X
Athletic Scholarships			X
Tutoring			X
Housing and Dining Facilities and Services			N/A
Recruitment of Student Athletes			X

Principal's Signature: *Louis E. Zanghley Jr* Date: 3/31/05

SCHOOL NAME

Western

2004-2005

TITLE IX

CORRECTIVE ACTION PLAN

DIRECTIONS:

1. For Column 1, indicate the intended area which needs corrective action in order to achieve gender equity. For Column 2, write the suggested change or activities that will correct the area in need of alteration. For Column 3, include the estimated completion date for the changes or activities.
2. It is possible to attain compliance with Title IX and no longer need "corrective" action. However, the KHSAA strongly encourages compliant schools to identify items for improvement (Column 1), activities to accomplish the improvement (Column 2) and a timetable for completion (Column 3) that will strengthen the athletic program.
3. You may copy this form as needed. Please attach corrective action plans along with audit forms and submit by April 15, 2005.

COLUMN 1 ITEM FOR CORRECTION/ IMPROVEMENT	COLUMN 2 SUGGESTED CHANGE/ ACTIVITIES	COLUMN 3 TIME TABLE FOR CORRECTIVE ACTION/ COMPLETION
Female Participation Percentages need to increase	Recruitment of non-participants Encourage participants to get involved in more activities	On going effort
Separate Rest room Facilities in Varsity Girls locker room	Construction of dividing wall and addition of sinks and toilets in Girls Varsity Locker room, separate from public restrooms	JCPS has surveyed the area, but has not set down a time frame for completion of work.
Shower and Restroom facilities added to Football Field House	Showers, sinks, toilets and urinals need to be added to	JCPS has surveyed the area, but has not set down a time frame for completion of work.

Principal's Signature: Jessie E. Thompson

Date: 3/31/05

2005-2006 INTERSCHOLASTIC ATHLETICS SURVEY
Summary of Student Responses

School Name	Western MST Magnet High School
School Enrollment	802 (SHOULD AGREE WITH FORM T-1)
Date	April 1, 2005
Completed By	Kevin Salyer, Athletic Director

Instructions:

1. Summarize the Student Athletics Interest Surveys Form T-61 by listing the total number of responses on the line next to each sport.
2. Under the Other Category please provide a listing of the sports as well as the number of students who are interested in participating.
3. Please sign and date the Summary Form (T-63) and mail the Summary Form only to the KHSAA by April 15, 2004. Do not mail the student surveys (Form T-61). However, these Forms should be maintained in your files in the event they are requested subsequently.

650 Number of Surveys
541 Total Returned (*A minimum of 80% return is expected*)
9 - 12 Grades Surveyed (*Should be grades 9-11 and 8th grade if school has a feeder system*)

How Was The Survey Administered? Cafeteria, during lunch time
 (e.g. was it given in all English classes, or all home rooms, or advisee/advisor?)

Fall Sports (List Total Number of Participation Responses)

7 Cross Country (Girls)
 5 Cross Country (Boys)
 3 Field Hockey (Girls)
 75 Football (Boys)
 6 Golf (Girls)
 7 Golf (Boys)
 12 Soccer (Girls)
 27 Soccer (Boys)
 18 Volleyball (Girls)
 11 Volleyball (Boys)

Winter Sport (List Total Number of Participation Responses)

31 Basketball (Girls)
 68 Basketball (Boys)
 11 Gymnastics (Girls)
 5 Indoor Track (Girls)
 17 Indoor Track (Boys)

- 3 _____ Swimming & Diving (Girls)
- 2 _____ Swimming & Diving (Boys)
- 11 _____ Wrestling (Boys)

Spring Sport (List Total Number of Participation Responses)

- 19 _____ Baseball (Boys)
- 17 _____ Fast Pitch Softball (Girls)
- 10 _____ Slow Pitch Softball (Girls)
- 8 _____ Tennis (Girls)
- 6 _____ Tennis (Boys)
- 7 _____ Track (Girls)
- 19 _____ Track (Boys)

Other Sports (From Student Survey T-61 Question 10)

Name of Sport	Number of Students Interested In Participating
Bowling _____	9 _____
_____	_____
_____	_____
_____	_____
_____	_____
_____	_____
_____	_____

Number of Students who participate in Intramural Sports.
(From Student Survey T-61 Question 5)

<u>Sport</u>	<u>Number</u>
<u>No Intramural Sports Offered</u>	_____
_____	_____
_____	_____
_____	_____
_____	_____

List Intramural Sports students are interested in adding:
(From Student Survey T-61 Question 6)

<u>Sport</u>	<u>Number</u>
<u>Basketball</u>	36 _____
<u>Volleyball</u>	23 _____
<u>Bowling</u>	8 _____
_____	_____
_____	_____
_____	_____

Participation in Non-School Sports Activities
 (From Student Survey T-61 Question 7)

<u>Sport</u>	<u>Number</u>
Bowling	8
Little League Baseball	11
Little League Softball	6
_____	_____
_____	_____
_____	_____

Reasons for not participating in interscholastic athletics.
 (From Survey Question 8)

<u>Response</u>	<u>Number</u>
24 I prefer other activities such as band, chorus, etc.	
159 I don't have time	
116 The practice schedules and game times are inconvenient	
2 The sport I like isn't offered	
15 It's too expensive	
6 I prefer to participate in club or intramural sports	
148 Working	
Other	

Student Suggestions to encourage participation

- Not having to have a physical
- Not having to pay insurance
- Practice less and play more

Principal's Signature: Louis E. Humphrey Jr. Date: 3/31/05



TITLE IX
FIVE-YEAR ACCOMPLISHMENTS
1999-2004

KHSAA
 Form T68
 Rev. 9/03

At the end of this school year, as we complete the 5-year KHSAA Title IX Compliance Project, the KHSAA will provide the Kentucky Department of Education a status report of accomplishments. Please review your school's progress since 1999-2000 and itemize those accomplishments which you feel you have made in your efforts to provide greater gender equity in athletics at your school.

(For example: Softball field lights (or other improvements), specific amounts of "prime time" playing opportunity adjustments, cheerleading balance, equitable equipment replacement schedules, equitable pay for coaches, equitable opportunities for facilities use, establishment of additional sports, establishment of more teams at various levels, equalizing number of contests per season, etc., etc.)

<p style="text-align: center;">Opportunities (Example: Sports or Levels of Teams Added for Girls)</p>	<p>We have been able to add Girls Golf and Girls Soccer to provide more opportunities for female participation.</p>
<p style="text-align: center;">Equipment and Supplies (Example: New Equipment – batting cages, soccer goals, uniforms, balls, bats, etc.)</p>	<p>Renovations on Softball field are complete. We have new dugouts, new backstop, new scorers building with storage underneath, new bleachers, and new electronic wireless scoreboard.</p>
<p style="text-align: center;">Scheduling of Games and Practice Times (Example: 50/50 scheduling ratio of boys' games to girls'. Additional weekend "prime time" opportunities)</p>	<p>We provide equal opportunities in terms of practice times and facilities, contest scheduling, weight training facility usage, and prime time contest scheduling.</p>

<p>Travel and Per-Diem (Example: Spring Break Trip for Softball, Upgrade of meals or meal opportunities)</p>	<p>All teams are provided transportation to and from games and practices.</p>
<p>Coaching (Example: Hiring of additional coaches, paying equitable salaries)</p>	<p>All coaches are board paid positions.</p>
<p>Locker Rooms, Practice and Competitive Facilities (Example: New or Renovated Facilities)</p>	<p>Locker rooms are assigned equitably, and all facilities are shared in an equitable manner.</p>
<p>Medical and Training Services (Example: Additional or equitable sports coverage by medical support personnel, access to weight room)</p>	<p>All teams have equal access to all facilities and services.</p>
<p>Publicity (Example: New or improved promotional opportunities at sporting events: 1. Dance/Pep/Cheerleaders 2. Posters 3. Radio/Television)</p>	<p>All teams are equitably represented in all publications, web sites, and in all other promotional opportunities.</p>
<p>Support Services (Example: Additional funding for girls' sports)</p>	<p>All sports and athletes are given equal treatment with respect to monies from the school and booster club.</p>

Other Title IX Advancements	Updates and upgrades on Girls Softball Field are now complete.
------------------------------------	---

Principal's
Signature: Louis E. Huzley Date: 3/31/05

Grade Summary 9 to 14

Grade	Member		Membership By Ethnicity																	
	M	F	White (not)			Black (not)			Hispanic			Asian/Pacif			American In			Other		
			M	F	T	M	F	T	M	F	T	M	F	T	M	F	T	M	F	T
Grade: 09	185	116	301	82	49	131	82	61	143	12	4	16	5	1	6	4	1	5	1.68%	
						43.52%			47.51%			5.32%			1.99%					
Grade: 10	109	64	173	44	32	76	50	29	79	9	2	11	5	1	6	1		1	0.58%	
						43.93%			45.66%			6.36%			3.47%					
Grade: 11	99	65	164	47	32	79	41	25	66	9	7	16	1	1	2	1		1	0.61%	
						48.17%			40.24%			9.76%			1.22%					
Grade: 12	67	54	121	25	15	40	37	30	67	5	9	14								
						33.06%			55.37%			11.57%								
Grade: 14	34	9	43	13	2	15	21	7	28											
						34.88%			65.12%											
Totals:	494	308	802	211	130	341	231	152	383	35	22	57	11	3	14	6	1	7	0.87%	
						42.52%			47.76%			7.11%			1.75%					

EXTRACURRICULAR ACTIVITIES IN JEFFERSON COUNTY SCHOOLS

2004-05

HIGH SCHOOL PARTICIPANTS

SPORTS	BOYS	GIRLS	TOTAL	BLACK	WHITE	OTHER	TOTAL
BASEBALL	18	0	18	2	11	5	18
BASKETBALL	39	19	58	52	4	2	58
CROSS COUNTRY	2	3	5	3	2	0	5
FIELD HOCKEY	0	0	0	0	0	0	0
FOOTBALL	48	0	48	34	13	1	48
GOLF	1	1	2	0	2	0	2
SOCCER	17	0	17	1	2	14	17
SOFTBALL	0	14	14	6	8	0	14
SWIMMING	0	0	0	0	0	0	0
TENNIS	8	8	16	5	10	1	16
TRACK	18	10	28	25	2	1	28
VOLLEYBALL	0	13	13	5	8	0	13
WRESTLING	6	0	6	4	1	1	6
TOTAL - SPORTS	157	68	225	137	63	25	225

ACTIVITIES - PAID SPONSOR	BOYS	GIRLS	TOTAL	BLACK	WHITE	OTHER	TOTAL
BAND	17	11	28	15	12	1	28
CHEERLEADERS	0	10	10	7	2	1	10
CHESS	8	0	8	3	4	1	8
CHORAL/CHORUS	59	41	100	54	43	1	98
DRAMA	10	10	20	12	8	0	20
DRILL CORP/DANCE TEAM	0	10	10	7	2	1	10
FUTURE PROBLEM SOLVING	0	0	0	0	0	0	0
NEWSPAPER	8	9	17	10	5	2	17
ORCHESTRA	0	0	0	0	0	0	0
QUICK RECALL	7	8	15	4	10	1	15
ROTC DRILL TEAM	0	0	0	0	0	0	0
ROTC RIFLE TEAM	0	0	0	0	0	0	0
SPEECH/DEBATE	2	2	4	2	2	0	4
YEARBOOK	8	9	17	10	5	2	17
TOTAL - PAID SPONSORS	119	110	229	124	93	10	227

ACTIVITIES - NON-PAID SPONSOR	BOYS	GIRLS	TOTAL	BLACK	WHITE	OTHER	TOTAL
Academic (events)	125	135	260	97	75	88	260
Academic Letters	57	63	120	33	44	43	120
Aides (various)	12	18	30	12	10	8	30
All-State (events)	5	8	13	5	7	1	13
Art Club	0	0	0	0	0	0	0
Beta Club	15	24	39	13	15	11	39
Bowling	0	0	0	0	0	0	0
Calendar Pageant	0	0	0	0	0	0	0
Class Officers	10	12	22	11	10	1	22
Co-op	21	27	48	23	17	8	48

High School Activities

EXTRACURRICULAR ACTIVITIES IN JEFFERSON COUNTY SCHOOLS

2004-05

HIGH SCHOOL PARTICIPANTS

Creative Writing	23	29	52	19	24	9	52
D. E. C. A. Club	0	0	0	0	0	0	0
Environmental Club	13	12	25	11	10	4	25
ESS	0	0	0	0	0	0	0
Executive Board	0	0	0	0	0	0	0
F. B. L. A.	0	18	18	9	7	2	18
F. H. A.	0	0	0	0	0	0	0
Flag Corps	0	0	0	0	0	0	0
G. A. T. E.	10	11	21	9	9	3	21
German Club	0	0	0	0	0	0	0
Governor's Cup	5	5	10	3	3	4	10
Honors (Academic/Civil)	315	342	657	258	239	160	657
Intramural Programs	0	0	0	0	0	0	0
Jazz/Pep Band	11	8	19	9	10	0	19
Key Club	0	0	0	0	0	0	0
Latin Club	0	0	0	0	0	0	0
Madrigals	0	0	0	0	0	0	0
Math (events)	8	12	20	7	6	7	20
Mock Trial	0	0	0	0	0	0	0
National Honor Society	14	13	27	9	11	7	27
Other Student Programs	267	230	497	211	194	92	497
Partnership Program	10	14	24	11	8	5	24
Pep Club	18	23	41	27	11	3	41
Powder Puff Football	0	0	0	0	0	0	0
Principal's Cabinet	0	0	0	0	0	0	0
Red Cross	6	6	12	6	5	1	12
ROTC Color Guard	0	0	0	0	0	0	0
S. A. D. D.	42	39	81	37	34	10	81
Scholastic Letters	57	63	120	33	44	43	120
Science (events)	21	23	44	17	16	11	44
Spanish Club	12	23	35	11	14	10	35
Step Team	0	18	18	15	3	0	18
String Ensemble	0	0	0	0	0	0	0
Student Council	13	17	30	14	13	3	30
Student Trainers	2	1	3	1	2	0	3
Talent Show	8	12	20	11	7	2	20
Weight Lifting	115	39	154	94	41	19	154
TOTAL - NON-PAID SPONSORS	1215	1245	2460	1016	889	555	2460

TOTAL - SPORTS	157	68	225	137	63	25	225
TOTAL - PAID SPONSORS	119	110	229	124	93	10	227
TOTAL - NON-PAID SPONSORS	1215	1245	2460	1016	889	555	2460

GRAND TOTAL	1491	1423	2914	1277	1045	590	2912
--------------------	-------------	-------------	-------------	-------------	-------------	------------	-------------

High School Activities

EXTRA SERVICE PAY SCHEDULE 2004-05

ATHLETIC AND RELATED ACTIVITIES IN SENIOR HIGH SCHOOLS

TITLE		STEP 0	STEP 1	STEP 2	STEP 3	STEP 4
Athletic Director		4004	4630	5256	5882	6507
Head Football		3337	3859	4380	4901	5423
Head Basketball (1)		3337	3859	4380	4901	5423
Asst. Football		2002	2315	2628	2941	3254
JV Basketball (1)		2002	2315	2628	2941	3254
Track (1)		2002	2315	2628	2941	3254
Baseball		2002	2315	2628	2941	3254
Softball		2002	2315	2628	2941	3254
Wrestling		2002	2315	2628	2941	3254
Volleyball		2002	2315	2628	2941	3254
Cheerleaders		2002	2315	2628	2941	3254
JROTC Rifle Team		2002	2315	2628	2941	3254
Sch Tech Coordinator		2002	2315	2628	2941	3254
Drill Corps		1669	1932	2190	2451	2711
Cross Country (1)		1669	1932	2190	2451	2711
Field Hockey		1669	1932	2190	2451	2711
Soccer (1)		1669	1932	2190	2451	2711
Tennis (1)		1669	1932	2190	2451	2711
JV Volleyball		1335	1543	1752	1961	2169
Golf (1)		1335	1543	1752	1961	2169
Swimming		1335	1543	1752	1961	2169
Chess Sponsor		1335	1543	1752	1961	2169
ROTC Drill Team		1335	1543	1752	1961	2169
Asst. Wrestling	26	1335	1543	1752	1961	2169
Asst. Field Hockey	JV SCH	1335	1543	1752	1961	2169
Asst. Track (1)	32	1001	1158	1314	1470	1627
Asst. Soccer (1)	JV SCH	1001	1158	1314	1470	1627
Freshman Basketball (1)		1001	1158	1314	1470	1627
Freshman Football		1001	1158	1314	1470	1627

ASSISTANT ATHLETIC DIRECTOR'S (GAME MANAGERS)

TITLE		STEP 0	STEP 1	STEP 2	STEP 3	STEP 4
Assistant Athletic Director		1700	2000	2300	2600	3000

Schools will be required to pay the listed Board approved scale. However, step progression is not mandatory.

SCHOOL FUNDED SPORT/SUPPORT POSITIONS

TITLE		STEP 0	STEP 1	STEP 2	STEP 3	STEP 4
SCHOOL FUNDED SPORT/SUPPORT		200	500	800	1100	1400

Schools will be required to pay the listed Board approved scale. However, step progression is not mandatory.

OTHER ACTIVITIES IN SENIOR HIGH SCHOOLS AND *YPAS

Title	STEP 0	STEP 1	STEP 2	STEP 3	STEP 4
Band Director	3003	3473	3942	4411	4880
Academic Competition Coordinator	2002	2315	2628	2941	3254
Asst Band Director	1335	1543	1752	1961	2169
*Choral Director	1335	1543	1752	1961	2169
Newspaper Sponsor	1335	1543	1752	1961	2169
Yearbook Sponsor	1335	1543	1752	1961	2169
*Drama Sponsor	1335	1543	1752	1961	2169
Speech and Debate	1335	1543	1752	1961	2169
*Instrumental Band Dir	1335	1543	1752	1961	2169
*Instrumental Strings Dir	1335	1543	1752	1961	2169
Orchestra (Concert) Dir	1335	1543	1752	1961	2169
Quick Recall Sponsor	1335	1543	1752	1961	2169
**JV Quick Recall Sponsor	500				
**Future Problem Solving Sponsor	318				

Band Director: Out of County Band Camp \$80.00 per day, Maximum 7 days

ATHLETIC AND RELATED ACTIVITIES IN MIDDLE SCHOOLS

TITLE	STEP 0	STEP 1	STEP 2	STEP 3	STEP 4
School Tech Coordinator	1669	1932	2190	2451	2711
Basketball (1)	1001	1158	1314	1470	1627
Academic Competition Coordinator	1001	1158	1314	1470	1627
Cheerleaders	667	772	876	980	1085
Drill Corps	334	386	438	490	542
Quick Recall	334	386	438	490	542
Future Problem Solving	334	386	438	490	542
Activities Sponsor	334	386	438	490	542

ACTIVITIES IN ELEMENTARY SCHOOLS

TITLE	STEP 0	STEP 1	STEP 2	STEP 3	STEP 4
School Tech Coordinator	1335	1543	1752	1961	2169

(1) Increment times 1.5 is paid to a person who coaches both teams.

■ Increment is for teams which meet approved participation levels.

■ Increment is for 100 or more members of marching band.

** Paid by the Academic Competition Department and not subject to step increases.

Western Math Science Technology Magnet High School

2501 Rockford Lane
Louisville, Kentucky 40216
(502) 485-8344
Fax: (502) 485-8969



Reba Woodall
Title IX Contact
KHSAA
2280 Executive Drive
Lexington, Kentucky
40505
Fax (859) 293-5999

September 27, 2005

Ms. Woodall,

Per our recent telephone conversation please find enclosed the requested information concerning Western High School.

Items enclosed are:

- 1) 2004 - 2005 T35 form
- 2) 2004 - 2005 T36 form
- 3) 2004 - 2005 coach's salaries
- 4) 2005 - 2006 Boys Basketball Schedule
- 5) 2005 - 2006 Girls Basketball Schedule
- 6) Photograph of Western High School Softball Scoreboard
- 7) Photograph of Western High School Softball Outfield Fence
- 8) Minutes of January 26, 2005 Gender Equity Committee Meeting

Feel free to contact me at (502) 485-8344 to discuss these documents or any other concerns. Thank you for your interest in Western High School Athletics.

Sincerely,

David A. Jagers
Athletic Director
Western High School

KHSAA
Form T-35
REV. 10/04

**2004-2005
BUDGETED AND ACTUAL EXPENDITURES - PROGRAM COMPARISON CHART
TO INCLUDE BOOSTER CLUB FUNDING**

	equipment and supplies	travel	awards	coaches' salaries (to include supplemental and extended employment)	facilities improvements	publications (if sport-specific)
	Expenditures	Expenditures	Expenditures	Expenditures	Expenditures	Expenditures
G basketball	\$1100	\$2500	\$100	\$0	\$0	N/A
B basketball	\$1400	\$2800	\$200	\$0	\$0	N/A
G softball	\$2300	\$600	\$200	\$0	\$3800	N/A
B baseball	\$1500	\$500	\$200	\$0	\$100	N/A
G cross country	\$100	\$100	\$100	\$0	\$0	N/A
B cross country	\$100	\$100	\$100	\$0	\$0	N/A
G golf	\$100	\$100	\$100	\$0	\$0	N/A
B golf	\$100	\$100	\$100	\$0	\$0	N/A
G soccer	\$200	\$300	\$100	\$0	\$100	N/A
B soccer	\$500	\$700	\$100	\$0	\$100	N/A
G swimming	N/A	N/A	N/A	N/A	N/A	N/A
B swimming	N/A	N/A	N/A	N/A	N/A	N/A

1. Total expenditures on T-35 and T-36 on the 2004-2005 year report due by April 15, 2005, should reflect the total monies spent (rounded off to nearest hundred) for the entire year of 2003-2004 ending June 30, 2004.
 2. Booster Club Funding/Contributions must be included in the expenditures total.

Principal's Signature: *John R. Houghley* Date: 3/31/05

KESAA
Form T-36
REV. 10/04

**2004-2005
BUDGETED AND ACTUAL EXPENDITURES - PROGRAM COMPARISON CHART 2
TO INCLUDE BOOSTER CLUB FUNDING**

Teams	equipment and supplies	travel	awards	coaches' salaries (to include supplemental and extended employment)	facilities improvements	publications (if sport-specific)
	Expenditures	Expenditures	Expenditures	Expenditures	Expenditures	Expenditures
G track	\$100	\$300	\$100	\$0	\$0	N/A
B track	\$100	\$300	\$100	\$0	\$0	N/A
G tennis	\$100	\$100	\$100	\$0	\$100	N/A
B tennis	\$100	\$100	\$100	\$0	\$100	N/A
G volleyball	\$600	\$500	\$100	\$0	\$100	N/A
B wrestling	\$200	\$400	\$100	\$0	\$0	N/A
G (list sport)						
B (football)						
G (list sport)						
B (list sport)						

1. Total expenditures on T-35 and T-36 on the 2004-2005 year report due by April 15, 2005, should reflect the total monies spent (rounded off to nearest hundred) for the entire year of 2003-2004 ending June 30, 2004.
 2. Booster Club Funding/Contributions must be included in the expenditures total.
 3. Indicate percentage of total expenditures for each gender: Total Expenditures \$ _____ % for boys _____ % for girls _____

Principal's Signature: *David E. Angelle* Date: 3/31/05

**Western High School
2501 Rockford Lane
Louisville, Kentucky
40216
(502) 485-8344**

2004 – 2005 Coach's Salaries

Goodin, Kentreal
Assistant Football \$2002.00
Boys JV Basketball \$2941.00

Davis, Colleen
Cross-Country \$1663.00

Dixon, Pamela
Drill Corps \$ 2190.00

Dyer, Jeremy
Girls Assistant Basketball \$2002.00

Floyd, Alesia
Cheerleader \$914.94

Fulmer, John
Freshman Football \$610.20

Gaines, Joseph
Wrestling \$1612.00

Goodson, Mclissa
Speech/Debate \$1543.00

Handley, Paul
Cross-Country \$1669.00
Boys Basketball \$5423.00

Irvin, Montrelle
Freshman Basketball \$1314.00
Soccer \$1669.00

Johnson, Howard
Assistant Basketball Coach \$3254.00
Golf \$2002.00

**Western High School
2501 Rockford Lane
Louisville, Kentucky
40216
(502) 485-8344**

2004 – 2005 Coach's Salaries

Loechle, Ralph
Baseball \$2338.00

Taylor, Richard
Asst. Football \$2315.00

Vinegar, Robert
Wrestling \$3251.00

Wakefield, Ronald
Asst. Football \$2002.00

Wright, Brian
Football \$4901.00
Track \$2003.00

Zell, Glendale
Basketball \$3337.00

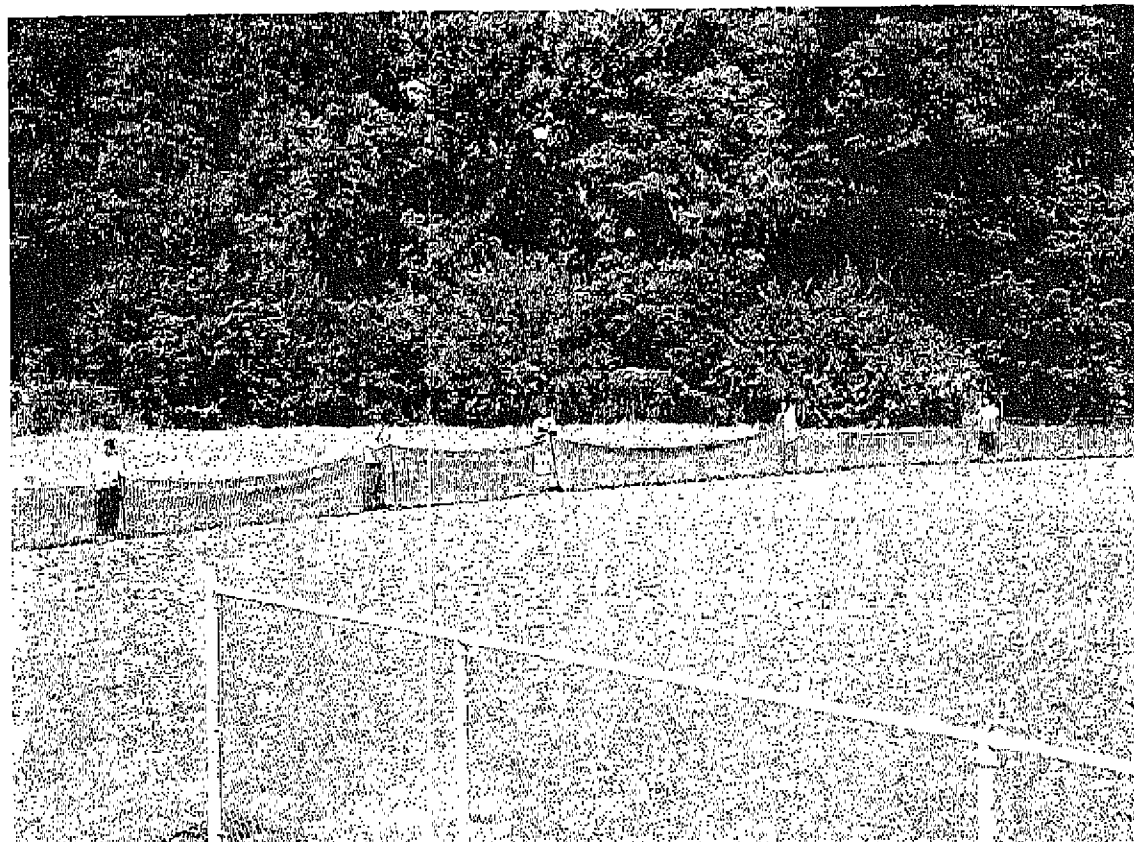
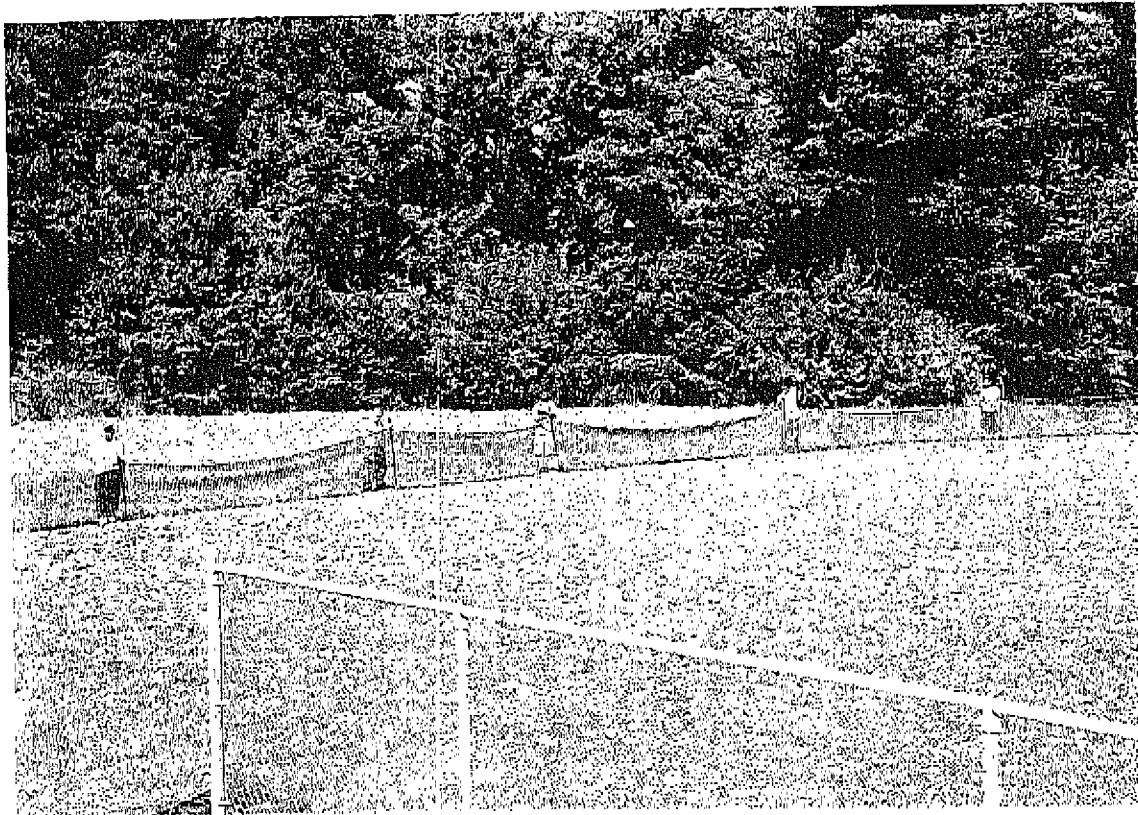
BASKETBALL SCHEDULE

WESTERN MST MAGNET HIGH SCHOOL

MARCH, 2005

VARSITY BOYS & GIRLS BASKETBALL 2005 - 2006

DATE	OPPONENT	(H) HOME (A) AWAY	TIME BOYS	TIME GIRLS
T Nov 29	Atherton	Home	7:30	6:00
F Dec 2	Presentation (JV)	Home	-----	7:30
F Dec 2		Away	7:30	-----
T Dec 6	Shawnee	Away		
F Dec 9	Blue Chip - TBA	Bellarmino	TBA	-----
F Dec 9	Portland Christian (JV)	Home	-----	7:30
S Dec 10	Central	Home	6:00	7:30
T Dec 13	Beth Haven *	Away	7:30	6:00
F Dec 16	Holy Cross *	Home	6:00	7:30
Dec 19 - 22	RW Jackson Memorial	Grant Co.	-----	TBA
Dec 28-30	Queen of the Bluegrass	East	-----	TBA
Dec 28-30	CAMPBELLVILLE	Carter		
T Jan 3	Fairdale	Home	7:30	6:00
F Jan 6				
T Jan 10	North Bullitt (JV)	Away	-----	7:30
Th Jan 12	Fern Creek **	Home	7:30	6:00
F Jan 13	Jeffersontown (JV)	Home	-----	7:30
W Jan 18	Moore	Away	6:00	7:30
F Jan 20	DeSales (F, JV)	Away	7:30	-----
F Jan 20		Home	-----	7:30
T Jan 24	North Bullitt (JV)	Away	7:30	-----
Th Jan 26	Jeffersontown (JV)	Away	-----	7:30
F Jan 27				-----
T Jan 31	Whitefield Academy (JV)	Home	-----	7:30
T Jan 31		Away	-----	
F Feb 3	Valley *	Away		
T Feb 7	PRP * (Senior Night)	Home	7:30	6:00
F Feb 10	Doss (Homecoming)	Home	7:30	6:00
T Feb 14	Seneca	Away	6:00	7:30
F Feb 17	Southern	Away		
T Feb 21	Butler	Away		
F Feb 24	Iroquois	Away		





Western MST Magnet High School

Minutes

Title IX Re-Visit January 26, 2005 .

Gender Equity Committee Members Present:

Mr. Louis Hughley, Mr. John Voelker, Jim Ashby, Glen Zell,
Louis Ashby, Alan Barnes, Kevin Salyer.

Also in attendance:

Keith Shault, JCPS Compliance, Reba Woodall, KHSAA Audit
team, and Gary Lawson, KHSAA Audit team.

Notes/Minutes of Meeting

Meeting began with an explanation of how Opportunities and Benefits for Boys and Girls Athletics are to be proportionally numbered and equivalent, this clarification was provided by KHSAA Audit team.

Ms. Woodall spoke on opportunities. She stated that:

- 1) A minimum of 3 GEC meetings are to be held seasonally
- 2) Minutes are to be taken, published, and placed in school's permanent Title IX file.
- 3) T-1, T-2, T-3 tests for compliance should be discussed and plans for increasing female participation at Western should be developed.

Mr. Lawson spoke on benefits. He stated:

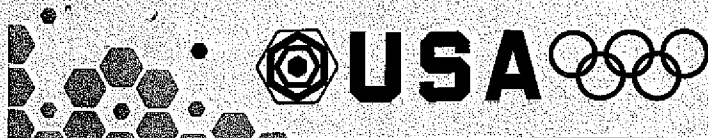
- 1) Locker room designation needed to reflect who had what locker room during each season, and this should be in school's permanent Title IX file
- 2) Softball up-grades needed to be completed, scoreboard up, temporary fence installed
- 3) Lights would be suggested for fields, but also understood the financial status of the athletic program does not readily afford this benefit
- 4) Office space designation needed to be equated, in other words reduce the number of boys programs with separate

- office spaces or increase the girls. This designation form needed to be a part of the school's permanent Title IX file
- 5) Booster club's expenditures are to be approved by school Principal
 - 6) Prime time scheduling must reflect the desired 10% difference between boys and girls scheduled basketball games
 - 7) Better efforts should be made to have more female coaches, and have more coaches actually teach on campus
 - 8) Public posting of weigh room usage should be in weight room, given to all coaches, and be placed in school's permanent Title IX file.

Corrective Action Plan for 2004 – 2005 should include:

- 1) Levels of interest in adding more opportunities, at more levels
- 2) Prime time scheduling should show equity, no larger than 10% difference in numbers of prime time (Friday, Saturday, and Sunday) home contests for boys and girls basketball.
- 3) Office space designation should reflect an equivalent number of shared offices between boys and girls sports teams
- 4) All Booster Club spending must receive the Principal's approval in advance

Meeting was brought to an end with a question and answer session.



Weston High School 74.
Reba R. Woodall

AD Dave Jagers
coach at Southern

8:30 pm - Left Message
for Mr. Jagers to call
- Talked with Kenta 7:30

School Phone - 502-485-8344

Got in Contact 8-25-05 9:30 pm
Will Call back at 1:30

He Called at 1:30 and
Told him to have all
this ready.

U.S. OLYMPIC TEAM
300 MILLION STRONG

Western High School

DAVE JAGERS - Ad^l School Title IX
Coordinator

Needs to Send Back -

FOR 2004/05 Yearly Report:

Budget forms T35 & T36 With
Coaches Salaries filled out.

FOR 04/05 Re-visit Report:

★ Copies of sign in sheets & minutes
from the gender equity
Committee Meetings for 04/05
- send in as soon as possible
(get a date from him - 2 weeks???)

Oct 1 - Due in office:
Proof of softball scoreboard
installed **KHSAA** outfield
fence installed, Tell him

To go out and take a picture and send to me.

— also remind him that his boys' girls basketball schedules are due in by Oct 1 also.

★ He may not be able to find any because the ~~other~~ past AD had not had any meetings until we got there in Jan.

He can count the Jan meeting as one & can copy that and send it in.

The past AD did send work completed by April 1st so there should of been at least one more meeting to do that ~~unless~~ **KHSAA** unless the guy did it all by himself. Can call me here or at home if

Western Math Science Technology Magnet High School

2501 Rockford Lane
Louisville, Kentucky 40216
(502) 485-8344
Fax: (502) 485-8969

Reba Woodall
Title IX Contact
KHSAA
2280 Executive Drive
Lexington, Kentucky
40505
Fax (859) 293-5999

September 27, 2005

Ms. Woodall,

Per our recent telephone conversation please find enclosed the requested information concerning Western High School.

Items enclosed are:

- 1) 2004 – 2005 T35 form
- 2) 2004 – 2005 T36 form
- 3) 2004 – 2005 coach's salaries
- 4) 2005 – 2006 Boys Basketball Schedule
- 5) 2005 – 2006 Girls Basketball Schedule
- 6) Photograph of Western High School Softball Scoreboard
- 7) Photograph of Western High School Softball Outfield Fence
- 8) Minutes of January 26, 2005 Gender Equity Committee Meeting

Feel free to contact me at (502) 485-8344 to discuss these documents or any other concerns. Thank you for your interest in Western High School Athletics.

Sincerely,



David A. Jagers
Athletic Director
Western High School

**2004-2005
BUDGETED AND ACTUAL EXPENDITURES - PROGRAM COMPARISON CHART
TO INCLUDE BOOSTER CLUB FUNDING**

	equipment and supplies	travel	awards	coaches' salaries (to include supplemental and extended employment)	facilities improvements	publications (if sport-specific)
	Expenditures	Expenditures	Expenditures	Expenditures	Expenditures	Expenditures
G basketball	\$1100	\$2500	\$100	\$0	\$0	N/A
B basketball	\$1400	\$2800	\$200	\$0	\$0	N/A
G softball	\$2300	\$600	\$200	\$0	\$3800	N/A
B baseball	\$1500	\$500	\$200	\$0	\$100	N/A
G cross country	\$100	\$100	\$100	\$0	\$0	N/A
B cross country	\$100	\$100	\$100	\$0	\$0	N/A
G golf	\$100	\$100	\$100	\$0	\$0	N/A
B golf	\$100	\$100	\$100	\$0	\$0	N/A
G soccer	\$200	\$300	\$100	\$0	\$100	N/A
B soccer	\$500	\$700	\$100	\$0	\$100	N/A
G swimming	N/A	N/A	N/A	N/A	N/A	N/A
B swimming	N/A	N/A	N/A	N/A	N/A	N/A

1. Total expenditures on T-35 and T-36 on the 2004-2005 year report due by April 15, 2005, should reflect the total monies spent (rounded off to nearest hundred) for the entire year of 2003-2004 ending June 30, 2004.

2. Booster Club Funding/Contributions must be included in the expenditures total.

Principal's Signature: *Steve K. Houghley* Date: *3/31/05*

**2004-2005
BUDGETED AND ACTUAL EXPENDITURES - PROGRAM COMPARISON CHART 2
TO INCLUDE BOOSTER CLUB FUNDING**

Teams	equipment and supplies	travel	awards	coaches' salaries (to include supplemental and extended employment)	facilities improvements	publications (if sport-specific)
	Expenditures	Expenditures	Expenditures	Expenditures	Expenditures	Expenditures
G track	\$100	\$300	\$100	\$0	\$0	N/A
B track	\$100	\$300	\$100	\$0	\$0	N/A
G tennis	\$100	\$100	\$100	\$0	\$100	N/A
B tennis	\$100	\$100	\$100	\$0	\$100	N/A
G volleyball	\$600	\$500	\$100	\$0	\$100	N/A
B wrestling	\$200	\$400	\$100	\$0	\$0	N/A
G (list sport)						
B (football)						
G (list sport)						
B (list sport)						

- Total expenditures on T-35 and T-36 on the 2004-2005 year report due by April 15, 2005, should reflect the total monies spent (rounded off to nearest hundred) for the entire year of 2003-2004 ending June 30, 2004.
- Booster Club Funding/Contributions must be included in the expenditures total.
- Indicate percentage of total expenditures for each gender: Total Expenditures \$ _____ % for boys _____ % for girls _____

Principal's Signature: *Dorci E. Angille* Date: 3/31/05

**Western High School
2501 Rockford Lane
Louisville, Kentucky
40216
(502) 485-8344**

2004 – 2005 Coach's Salaries

Goodin, Kentreal
Assistant Football \$2002.00
Boys JV Basketball \$2941.00

Davis, Colleen
Cross-Country \$1663.00

Dixon, Pamela
Drill Corps \$ 2190.00

Dyer, Jeremy
Girls Assistant Basketball \$2002.00

Floyd, Alesia
Cheerleader \$914.94

Fulmer, John
Freshman Football \$610.20

Gaines, Joseph
Wrestling \$1612.00

Goodson, Melissa
Speech/Debate \$1543.00

Handley, Paul
Cross-Country \$1669.00
Boys Basketball \$5423.00

Irvin, Montrelle
Freshman Basketball \$1314.00
Soccer \$1669.00

Johnson, Howard
Assistant Basketball Coach \$3254.00
Golf \$2002.00

**Western High School
2501 Rockford Lane
Louisville, Kentucky
40216
(502) 485-8344**

2004 – 2005 Coach's Salaries

Loechle, Ralph
Baseball \$2338.00

Taylor, Richard
Asst. Football \$2315.00

Vinegar, Robert
Wrestling \$3251.00

Wakefield, Ronald
Asst. Football \$2002.00

Wright, Brian
Football \$4901.00
Track \$2003.00

Zell, Glendale
Basketball \$3337.00

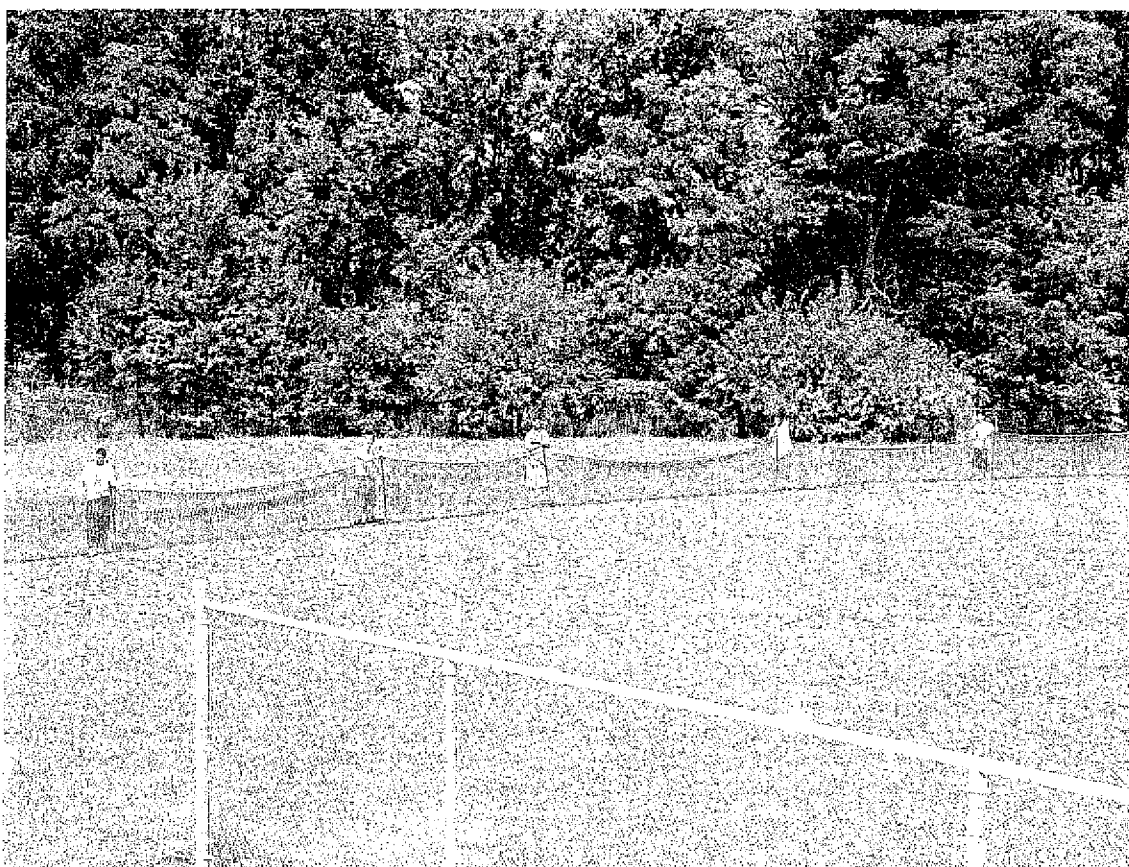
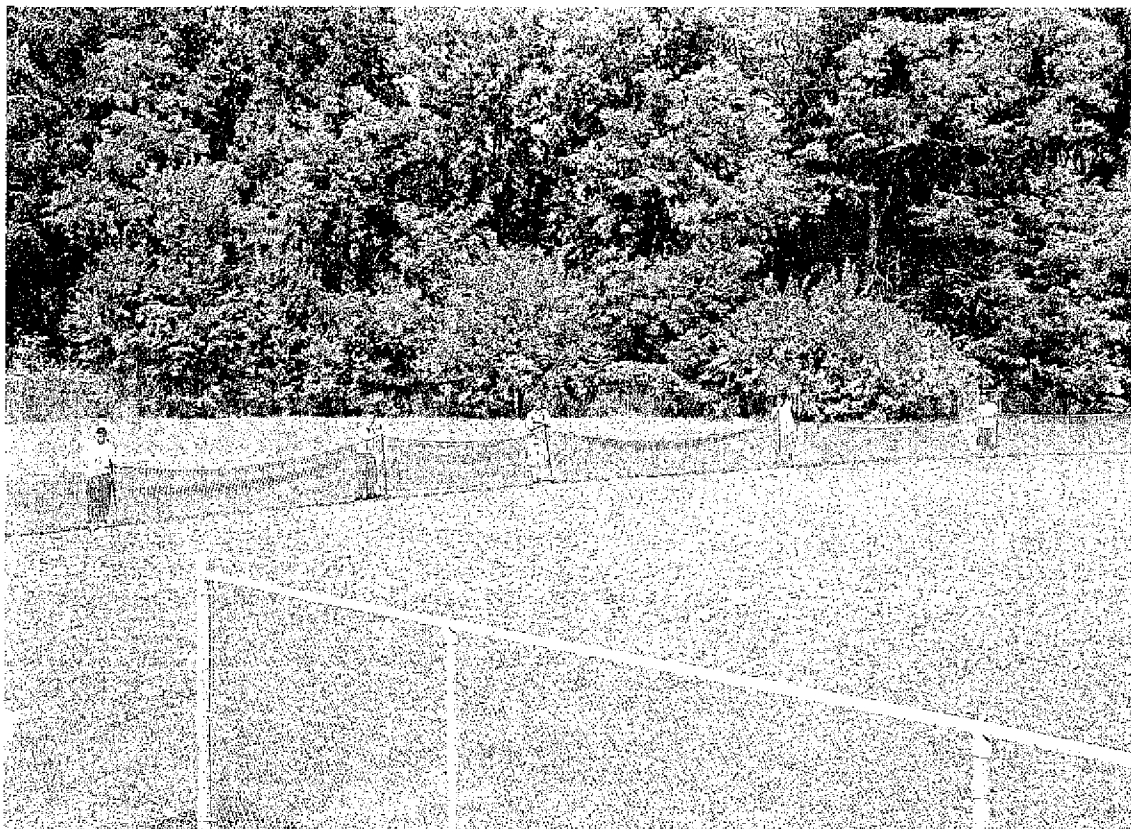
BASKETBALL SCHEDULE

WESTERN MST MAGNET HIGH SCHOOL

MARCH, 2005

VARSITY BOYS & GIRLS BASKETBALL 2005 - 2006

DATE	OPPONENT	(H) HOME (A) AWAY	TIME BOYS	TIME GIRLS
T Nov 29	Atherton	Home	7:30	6:00
F Dec 2	Presentation (JV)	Home	-----	7:30
F Dec 2		Away	7:30	-----
T Dec 6	Shawnee	Away		
F Dec 9	Blue Chip – TBA	Bellarmine	TBA	-----
F Dec 9	Portland Christian (JV)	Home	-----	7:30
S Dec 10	Central	Home	6:00	7:30
T Dec 13	Beth Haven *	Away	7:30	6:00
F Dec 16	Holy Cross *	Home	6:00	7:30
Dec 19 - 22	RW Jackson Memorial	Grant Co.	-----	TBA
Dec 28-30	Queen of the Bluegrass	East	-----	TBA
Dec 28-30	CAMPBELLVILLE	Carter		
T Jan 3	Fairdale	Home	7:30	6:00
F Jan 6				
T Jan 10	North Bullitt (JV)	Away	-----	7:30
Th Jan 12	Fern Creek **	Home	7:30	6:00
F Jan 13	Jeffersontown (JV)	Home	-----	7:30
W Jan 18	Moore	Away	6:00	7:30
F Jan 20	DeSales (F, JV)	Away	7:30	-----
F Jan 20		Home	-----	7:30
T Jan 24	North Bullitt (JV)	Away	7:30	-----
Th Jan 26	Jeffersontown (JV)	Away	-----	7:30
F Jan 27				-----
T Jan 31	Whitefield Academy (JV)	Home	-----	7:30
T Jan 31		Away		-----
F Feb 3	Valley *	Away		
T Feb 7	PRP * (Senior Night)	Home	7:30	6:00
F Feb 10	Doss (Homecoming)	Home	7:30	6:00
T Feb 14	Seneca	Away	6:00	7:30
F Feb 17	Southern	Away		
T Feb 21	Butler	Away		
F Feb 24	Iroquois	Away		





Western MST Magnet High School

Minutes

Title IX Re-Visit January 26, 2005

Gender Equity Committee Members Present:

Mr. Louis Hughley, Mr. John Voelker, Jim Ashby, Glen Zell,
Louis Ashby, Alan Barnes, Kevin Salyer.

Also in attendance:

Keith Shault, JCPS Compliance, Reba Woodall, KHSAA Audit
team, and Gary Lawson, KHSAA Audit team.

Notes/Minutes of Meeting

Meeting began with an explanation of how Opportunities and Benefits for Boys and Girls Athletics are to be proportionally numbered and equivalent, this clarification was provided by KHSAA Audit team.

Ms. Woodall spoke on opportunities. She stated that:

- 1) A minimum of 3 GEC meetings are to be held seasonally
- 2) Minutes are to be taken, published, and placed in school's permanent Title IX file.
- 3) T-1, T-2, T-3 tests for compliance should be discussed and plans for increasing female participation at Western should be developed.

Mr. Lawson spoke on benefits. He stated:

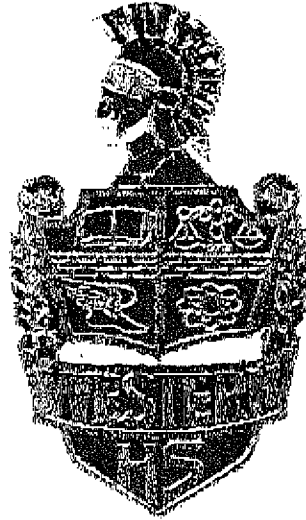
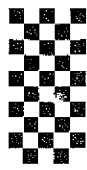
- 1) Locker room designation needed to reflect who had what locker room during each season, and this should be in school's permanent Title IX file
- 2) Softball up-grades needed to be completed, scoreboard up, temporary fence installed
- 3) Lights would be suggested for fields, but also understood the financial status of the athletic program does not readily afford this benefit
- 4) Office space designation needed to be equated, in other words reduce the number of boys programs with separate

- office spaces or increase the girls. This designation form needed to be a part of the school's permanent Title IX file
- 5) Booster club's expenditures are to be approved by school Principal
 - 6) Prime time scheduling must reflect the desired 10% difference between boys and girls scheduled basketball games
 - 7) Better efforts should be made to have more female coaches, and have more coaches actually teach on campus
 - 8) Public posting of weigh room usage should be in weight room, given to all coaches, and be placed in school's permanent Title IX file.

Corrective Action Plan for 2004 – 2005 should include:

- 1) Levels of interest in adding more opportunities, at more levels
- 2) Prime time scheduling should show equity, no larger than 10% difference in numbers of prime time (Friday, Saturday, and Sunday) home contests for boys and girls basketball.
- 3) Office space designation should reflect an equivalent number of shared offices between boys and girls sports teams
- 4) All Booster Club spending must receive the Principal's approval in advance

Meeting was brought to an end with a question and answer session.



**WESTERN MATH SCIENCE TECHNOLOGY
MAGNET HIGH SCHOOL**

2501 Rockford Lane

Louisville, Kentucky 40216

PHONE (502) 485-8344 FAX (502)485-8969

TO: REBA WOODALL (TITLE IX)

FROM: DAVE JAGGERS A.D.

FAX: 859-293-5999 PAGES: 12

DATE: SEPT.: 27, 2005.

COMMENTS: I WILL SEND THIS
INFORMATION THROUGH THE
MAIL.